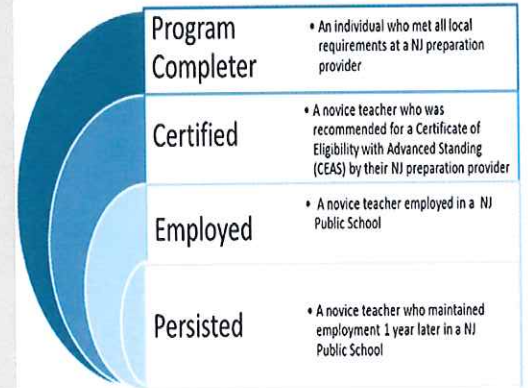


Monmouth University  
Educator Preparation Program Performance Reports  
2015-2017



## Monmouth University Report

The goal of this report is to share the available state data on novice teachers that this Educator Preparation Provider (EPP) recommended for certification. The visual to the right describes the categories of information based upon data available. To create the report, the New Jersey Department of Education has synthesized data from multiple sources: NJSmart, TCIS, NJSure and other state data collections. The base of the report is a **1 year cohort of teachers who were certified in 2014-2015 with a CEAS and/or employed in the 2016-2017 school year (SY) in a New Jersey public school as of October 15, 2016.** Throughout the report, the graphics and tables reference their data source with a 1, 2, 3, or 4. For additional details see further explanation on the last page.



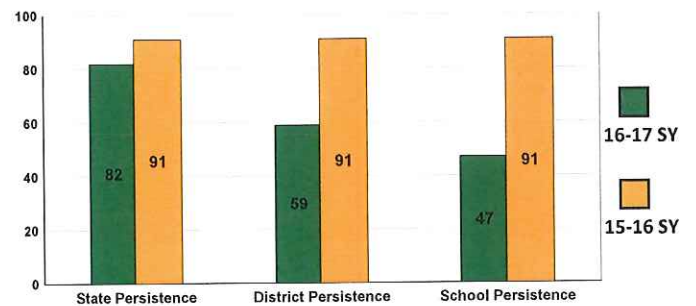
### Hire Rate (1,2)

	2017	CEAS Statewide
Employed certified completer in 16-17 SY	111	68 % 65 %
CEAS certified completer in 14-15 SY	163	

	2016	CEAS Statewide
Employed certified completer in 15-16 SY	110	65 % 64 %
CEAS certified completer in 13-14 SY	169	

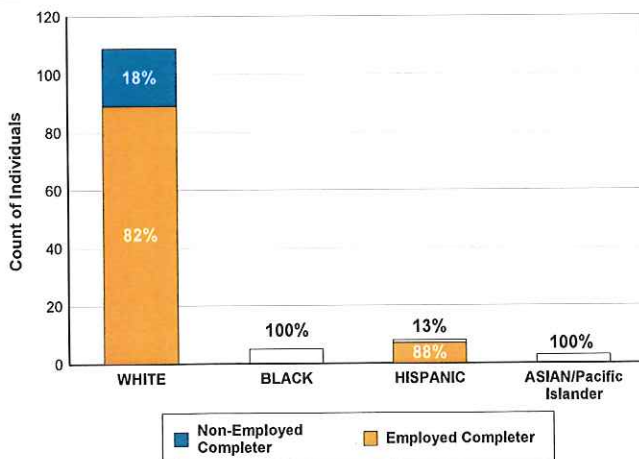
\*The 1 year persistence count for the 16-17 SY is derived from the 14-15 SY certified completers

### \*Persistence (2)

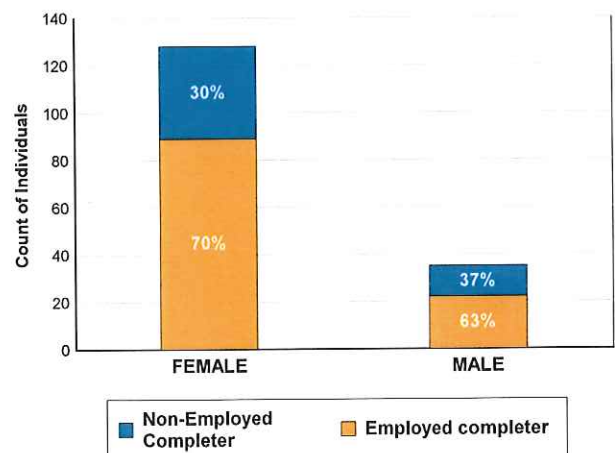


Persistence	Percent
Persisted In State in 16-17	90.1%
Persisted In District in 16-17	64.8 %
Persisted In School in 16-17	51.6 %

### Race (2,3)



### Gender (2,3)



1 TCIS  
 2 NJSMART  
 3 NJSURE  
 4 Non-submitter to NJSURE



## Novice New Jersey Public School Teachers Profile

The following tables capture information about where this EPP's New Jersey public school employed completers were hired as of October 15, 2016. The 'School Classification' table refers to our reward and priority schools. The 'Classroom Assignment: Teacher Shortage' table refers to individuals who obtained an endorsement in a teacher shortage area and are employed in a teacher shortage position. 'District Factor Group (DFG)' refers to the grouping of similar districts by socio-economic level. 'Compensation' refers to the average of all starting salaries of this EPP's public school employed completers by region.

School Classification (2)			
	Employed as of October 15, 2016	Percentage Employed as teachers	Percentage Employed Statewide
Priority Schools	2	2 %	2 %
Focus Schools	12	11 %	8 %
Reward Schools	0	0 %	0 %
Not Classified	97	87 %	89 %

Classroom Assignment: Teacher Shortage Area (1,2)			
	Individuals obtaining NJ CEAS	Employed as of October 15, 2016	Employed in Teacher Shortage Area
Teacher Shortage Area	97	77	36
Non-Teacher Shortage Area	66	34	

Both the School Classification Table and DFG table, may include multiple locations of employment.

District Factor Group (DFG) (2)			
	Employed as of October 15, 2016	Percentage Employed as teachers	Percentage Employed Statewide
A	5	5%	18%
B	12	12%	12%
CD	9	9%	9%
DE	21	20%	12%
FG	18	17%	10%
GH	21	20%	15%
I	12	12%	18%
J	4	4%	4%
Vocational	1	1%	1%

Compensation (2)		
	Median Salary	Number of Teachers
All Employed teachers in North region	\$ 51,818	17
All Employed teachers in Central region	\$ 52,962	68
All Employed teachers in South region	\$ 51,550	22

1 TCIS  
 2 NJSMART  
 3 NJSURE  
 4 Non-submitter to NJSURE



### Novice New Jersey Public School Teachers Profile, cont'd

The following tables capture information about this EPP's certified completers. The 'Number of Endorsements' table shows the hire rates for completers with multiple endorsements. The 'Cumulative GPA' is the median GPA for all certified completers from an EPP. The 'EPP's Largest Programs' is a chart capturing the most prevalent endorsements earned by certified completers within this EPP and their hire rate.

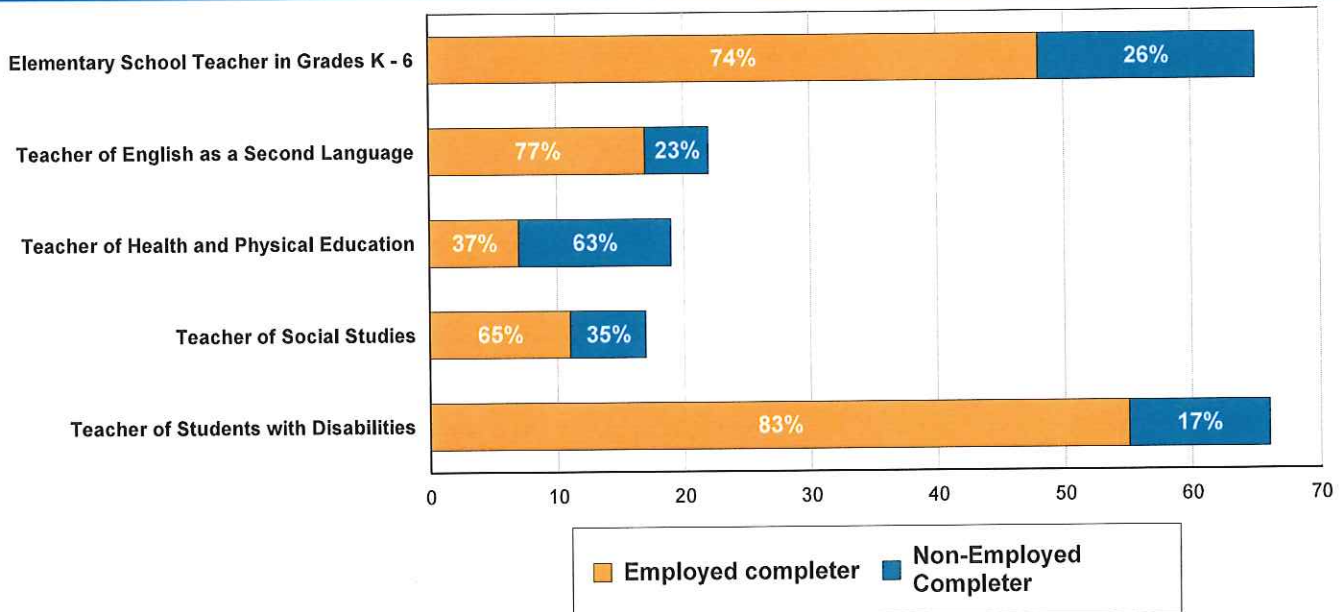
Number Of Endorsements Obtained and Employment (1,2)

	Individuals obtaining NJ CEAS	Employed as of October 15th, 2016	Percent employed as teachers
One Endorsement	89	53	60%
Two Endorsements	70	54	77%
Three or More Endorsements	4	4	100%

Cummulative GPA (4)

	Individuals obtaining NJ CEAS
Median GPA	

EPP's 5 Largest Programs (1,2)



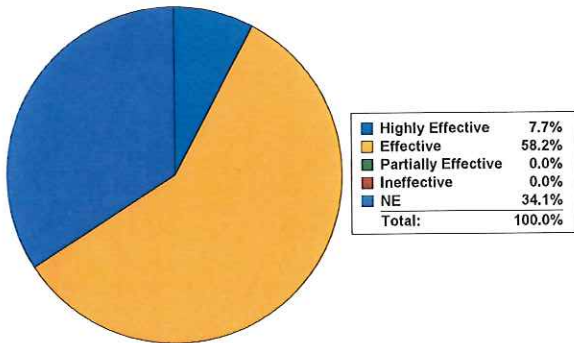
1 TCIS  
 2 NJSMART  
 3 NJSURE  
 4 Non-submitter to NJSURE



## Novice New Jersey Public School Teachers Profile, cont'd

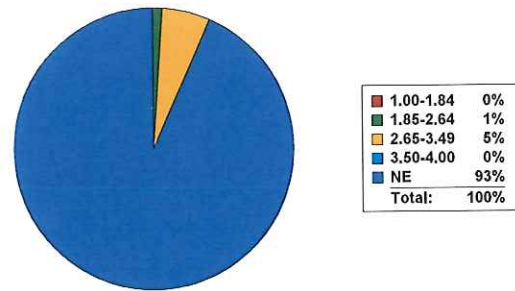
The charts and tables below capture [AchieveNJ](#) evaluation data for this EPP's 14-15 certified completers employed and evaluated in a New Jersey Public School during the 15-16 SY. The 'Evaluation' chart and table represents this EPP's employed completer's available summative evaluation rating. 'NE' means not evaluated. For further description about the evaluation tables, please see the last page.

### Evaluation (2)



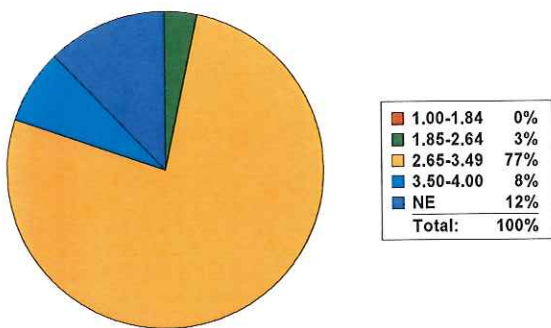
Summative Rating	Individuals evaluated in 15-16 SY
Highly Effective	7.00
Effective	53.00
Partially Effective	0.00
Ineffective	0.00
NE	31.00

### Evaluation : Teacher SGP Score (2)



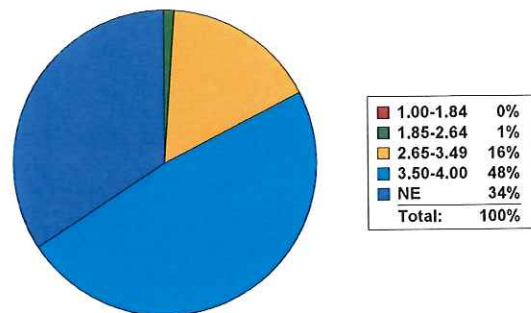
Summative Score	Individuals evaluated in 15-16 SY
1.00-1.84	0.00
1.85-2.64	1.00
2.65-3.49	5.00
3.50-4.00	0.00
NE	85.00

### Evaluation : Teacher Practice Score (2)



Summative Score	Individuals evaluated in 15-16 SY
1.00-1.84	0.00
1.85-2.64	3.00
2.65-3.49	70.00
3.50-4.00	7.00
NE	11.00

### Evaluation : Teacher SGO Score (2)



Summative Score	Individuals evaluated in 15-16 SY
1.00-1.84	0.00
1.85-2.64	1.00
2.65-3.49	15.00
3.50-4.00	44.00
NE	31.00

1 TCIS  
 2 NJSMART  
 3 NJSURE  
 4 Non-submitter to NJSURE



**Novice New Jersey Public School Teachers Profile, cont'd**

The tables on the remaining pages capture additional certification information about this EPP's certified completers and where applicable, employment data for those individuals that were hired as of October 15, 2016. The Praxis II table has a suppression of 10. If there are multiple tests listed, one is the old test (previous version) and one is the new test (current version).

Praxis II Results: Average Scaled Score (1)			
Praxis II Test	Test Cut Score	EPP Average Scaled Score	State Average Scaled Score
Elementary Education: Multiple Subjects Reading Language Arts Subtest (old)	165	175	177
Health and Physical Education: Content Knowledge (old)	151	165	160
Elementary Education: Multiple Subjects Science Subtest (new)	159	169	170
Mathematics: Content Knowledge	160	170	170
English Language Arts: Content Knowledge	167	175	177
Elementary Education: Multiple Subjects Social Studies Subtest (new)	155	164	166
Elementary Education: Multiple Subjects Mathematics (old)	164	173	174
Social Studies: Content Knowledge	157	163	166

1 TCIS  
 2 NJSMART  
 3 NJSURE  
 4 Non-submitter to NJSURE



New Jersey Department of Education  
 Educator Preparation Provider Performance Report 2017  
 Monmouth University

Certification Endorsement Area and Employment (1,2)			
	Individuals obtaining NJ CEAS	Employed as of October 15th, 2016	Percent employed as teachers
Elementary School Teacher with Mathematics Specialization: in Grades 5 - 8	1	1	100%
Teacher of Chemistry	1	1	100%
Teacher of Spanish	3	3	100%
Teacher of Supplemental Instruction: Reading and Mathematics, Grades K-8	1	1	100%
Teacher of Preschool through Grade 3	7	6	86%
Teacher of Students with Disabilities	66	55	83%
Teacher of Mathematics	10	8	80%
Teacher of English as a Second Language	22	17	77%
Elementary School Teacher in Grades K - 6	65	48	74%
Teacher of English	13	9	69%
Teacher of Biological Science	3	2	67%
Teacher of Social Studies	17	11	65%
Teacher of Bilingual/Bicultural Education	2	1	50%
Teacher of Music	5	2	40%
Teacher of Health and Physical Education	19	7	37%
Teacher of Art	7	2	29%

1 TCIS  
 2 NJSMART  
 3 NJSURE  
 4 Non-submitter to NJSURE



New Jersey Department of Education  
 Educator Preparation Provider Performance Report 2017  
 Monmouth University

Transfer Student (4)			
	Individuals obtaining NJ CEAS	Employed as of October 15, 2016	Percent employed as teachers
Reported as transfered			%

State of Residence, Certification (4)			
	Individuals obtaining NJ CEAS	Employed as of October 15, 2016	Percent employed as teachers
Reported as Out of State while enrolled in program			%

Area of Study (4)			
	Individuals obtaining NJ CEAS	Employed as of October 15th, 2016	Percent employed as teachers
			%

Classroom Assignment: Content Area (1,2)		
	Employed as of October 15th, 2016	Percent employed as teachers
Health and Physical Education	5	4 %
English Language and Literacy	13	11 %
Fine and Performing Arts	4	3 %
Life and Physical Sciences	3	3 %
Math	14	12 %
Early Childhood Education(PK-K)	9	8 %
Social Sciences and History	6	5 %
ESL	8	7 %
Elementary Generalist	33	29 %
Foreign Language and Literature	3	3 %
Special Ed	17	15 %

1 TCIS  
 2 NJSMART  
 3 NJSURE  
 4 Non-submitter to NJSURE





New Jersey Department of Education  
Educator Preparation Provider Performance Report 2017  
Monmouth University

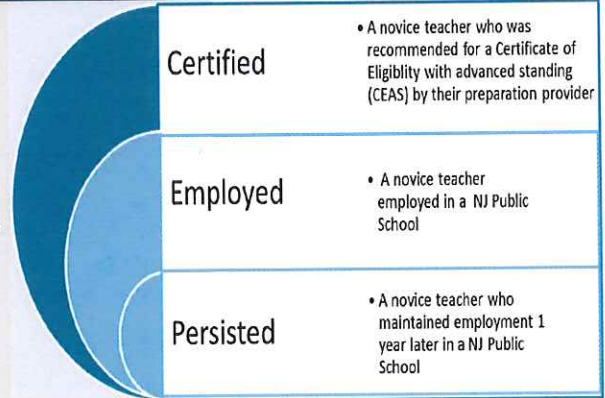
**Data Source Notes:** Certification data is submitted to the NJ Department of Education (NJDOE) by EPPs or individual candidates via the Teacher Certification Information System (TCIS) and is verified by the EPPs prior to publication of the EPP Performance Reports. Employment data is submitted to the NJDOE by school districts and gathered from New Jersey's student- and staff-level Standards Measurement and Resource for Teaching data system (NJS MART) data. Higher Education data is submitted to the NJDOE by Institutions of Higher Education and collected from the Office of the Secretary of Higher Education's Student Unit Record system (NJSURE). Not all Institutions of Higher Education are required to submit data to the NJSURE database. Non-submitters have been noted accordingly. For compensation data, North Region includes: Bergen, Essex, Hudson, Morris, Passaic, Sussex, and Warren Counties. Central Region includes: Hunterdon, Mercer, Middlesex, Monmouth, Somerset, and Union Counties. South Region includes: Atlantic, Burlington, Camden, Cape May, Cumberland, Gloucester, Ocean, and Salem Counties. The areas considered DFG A and geographic shortage areas are: Asbury Park City, Atlantic City, Bridgeton City, Buena Regional, Camden City, City Of Orange Twp, Commercial Twp, Dover Town, Downe Twp, East Newark Boro, East Orange, Egg Harbor City, Elizabeth City, Fairfield Twp, Fairview Boro, Irvington Township, Keansburg Boro, Lawrence Twp, Millville City, New Brunswick City, Newark City, North Wildwood City, Passaic City, Paterson City, Paulsboro Boro, Penns Grove-Carney's Pt Regional, Perth Amboy City, Pleasantville City, Quinton Twp, Salem City, Seaside Heights Boro, Trenton City, Union City, Vineland City, Washington Twp, Wildwood City, and Woodbine Boro. Suppression rules have been applied to Praxis II data. For the evaluation data, the 'Teacher Student Growth Percentile (SGP) Score' chart and table represents this EPP's employed completer's available SGP scores for teachers that were teaching in tested grades and subjects. 'Teacher Practice Score' chart and table represents this cohort's employed completer's available scores from local observations. The 'Teacher Student Growth Objective (SGO) Score' chart and table shows this cohort's employed completer's available SGO scores. Any questions or inquiries regarding the information contained in this report, please email [rpr@doe.state.nj.us](mailto:rpr@doe.state.nj.us)

- 1 TCIS
- 2 NJS MART
- 3 NJSURE
- 4 Non-submitter to NJSURE



## Monmouth University Cohort Profile

The goal of this report is to share the available state data on novice teachers this Educator Preparation Provider (EPP) recommended for certification. The visual to the right describes the categories of information shared based upon data available. To create the report, the NJ Department of Education has synthesized the data from multiple sources: NJSmart, TCIS, NJSure and other state data collections. The base of the report is a **2 year cohort of teachers who were certified in 12-13 and 13-14 with a CEAS; employed in the 2015-2016 SY in a New Jersey public school as of October 15, 2015**. Throughout the report, the graphics and tables reference their data source with a 1, 2, 3, or 4. For additional details see footnotes and a data explanation on the last page.



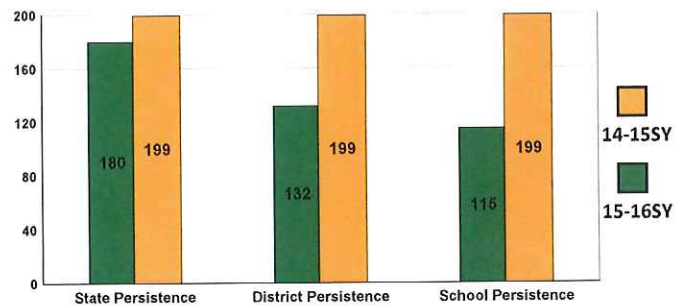
### Hire Rate (1,2)

	2016		CEAS Statewide
Employed certified completer in 15-16 SY	232	65 %	65 %
CEAS certified completer in 12-13 and 13-14	357		

	2015		CEAS Statewide
Employed certified completer in 14-15SY	229	57 %	56 %
CEAS certified completer in 11-12 and 12-13	399		

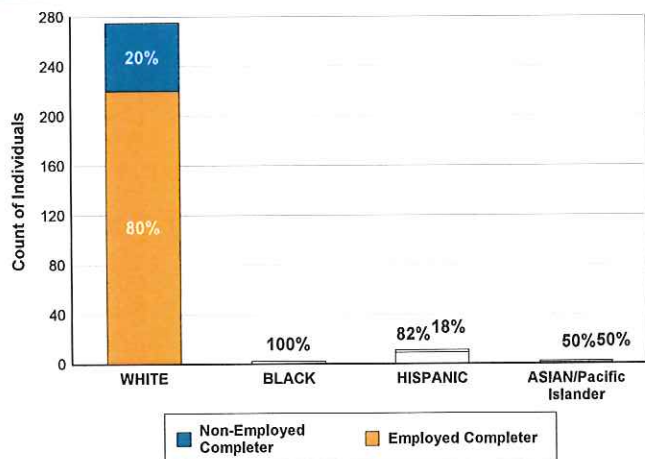
The 1 year persistence count for the 14-15 SY is derived from the 12-13 and 13-14 certified completers

### Persistence (2)

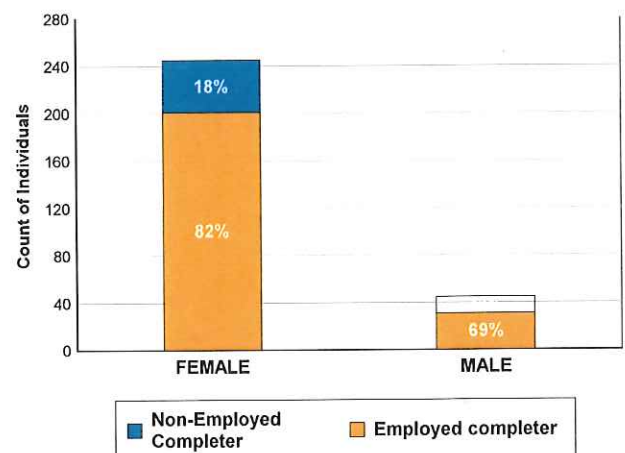


Persistence	Percent
Persisted In State in 15-16	90.5%
Persisted In District in 15-16	66.3 %
Persisted In School in 15-16	57.8 %

### Race (2,3)



### Gender (2,3)



1 TCIS  
 2 NJSURE  
 3 NJSURE  
 4 Non-submitter to NJSURE



## Novice New Jersey Public School Teachers Profile

The following tables capture information about where this EPP's New Jersey public school employed completers were hired as of October 15, 2015. The 'School Classification' table refers to our reward and priority schools. The 'Classroom Assignment: Teacher Shortage' table refers to individuals who obtained an endorsement in a teacher shortage area and are employed in a teacher shortage position. 'District Factor Group (DFG)' refers to the grouping of similar districts by socio-economic level. 'Compensation' refers to the average of all starting salaries of this EPP's public school employed completers by region.

School Classification (2)			
	Employed as of October 15, 2015	Percentage Employed as teachers	Percentage Employed Statewide
Priority Schools	2	1 %	2 %
Focus Schools	10	4 %	8 %
Reward Schools	9	4 %	2 %
Not Classified	212	91 %	88 %

Classroom Assignment: Teacher Shortage Area (1,2)			
	Individuals obtaining NJ CEAS	Employed as of October 15, 2015	Employed in Teacher Shortage Area
Teacher Shortage Area	218	169	98
Non-Teacher Shortage Area	139	63	

Both the School Classification Table and DFG table, may include multiple locations of employment.

District Factor Group (DFG) (2)			
	Employed as of October 15, 2015	Percentage Employed as teachers	Percentage Employed Statewide
A*	12	5%	11%
B	22	9%	9%
CD	18	8%	8%
DE	23	10%	11%
FG	30	13%	11%
GH	51	22%	13%
I	38	16%	16%
J	10	4%	4%
Charter	6	3%	5%
Vocational	23	10%	12%

Compensation (2)		
	Median Salary	Number of Teachers
All Employed teachers in North region	\$ 51,382	43
All Employed teachers in Central region	\$ 52,161	145
All Employed teachers in South region	\$ 50,215	33

\*DFG A is a New Jersey geographic teacher shortage area

1 TCIS  
 2 NJSMART  
 3 NJSURE  
 4 Non-submitter to NJSURE



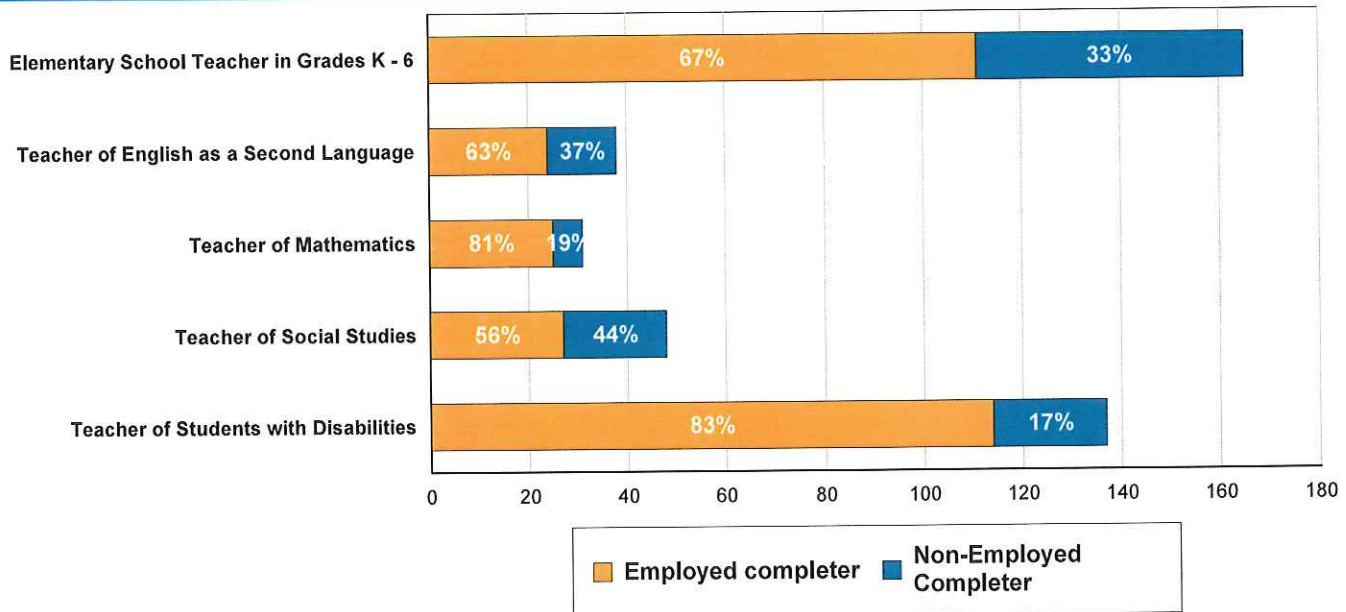
## Novice New Jersey Public School Teachers Profile, cont'd

The following tables capture information about this EPP's certified completers. The 'Number of Endorsements' table shows the hire rates for completers with multiple endorsements. The 'Cumulative GPA' is the median GPA for all certified completers from an EPP. The 'EPP's largest programs' is a chart capturing the most prevalent endorsements earned by certified completers within this EPP and their hire rate.

Number Of Endorsements Obtained and Employment (1,2)			
	Individuals obtaining NJ CEAS	Employed as of October 15th, 2015	Percent employed as teachers
One Endorsement	168	86	51%
Two Endorsements	181	138	76%
Three or More Endorsements	8	8	100%

Cummulative GPA (4)	
	Individuals obtaining NJ CEAS
Median GPA	

## EPP's Largest Programs (1,2)



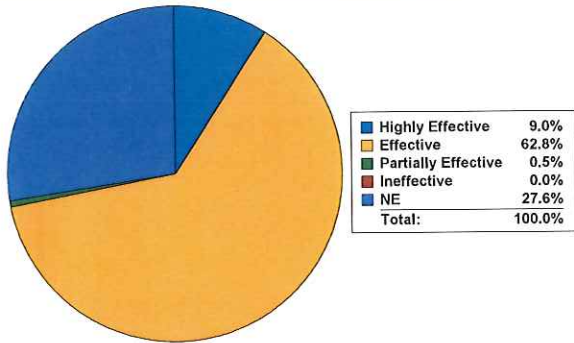
1 TCIS  
 2 NJSMART  
 3 NJSURE  
 4 Non-submitter to NJSURE



## Novice New Jersey Public School Teachers Profile, cont'd

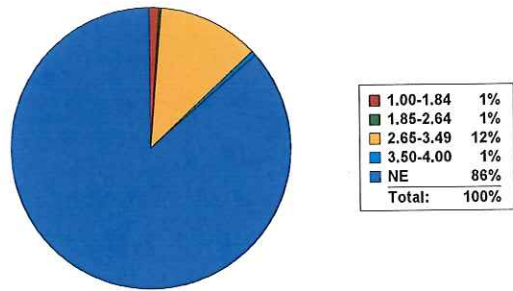
The charts and tables below capture AchieveNJ evaluation data for this EPP's employed completers evaluated in a New Jersey Public School during the 14-15 SY. **There were 199 individuals from this cohort** who were employed in the 14-15 SY and some individuals may have worked in multiple locations. The 'Evaluation' chart and table represents this EPP's employed completer's available summative evaluation rating. For further description about Evaluation tables please see the last page. NE means 'not evaluated'.

### Evaluation (2)



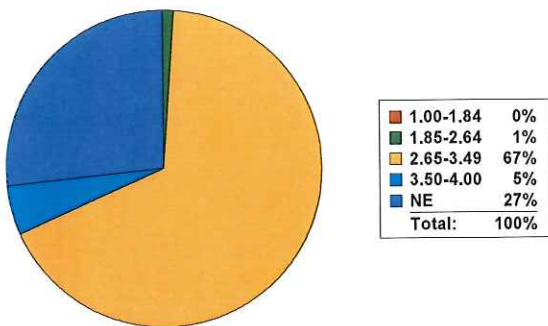
Summative Rating	Individuals evaluated in 14-15 SY
Highly Effective	18.00
Effective	125.00
Partially Effective	1.00
Ineffective	0.00
NE	55.00

### Evaluation : Teacher SGP Score (2)



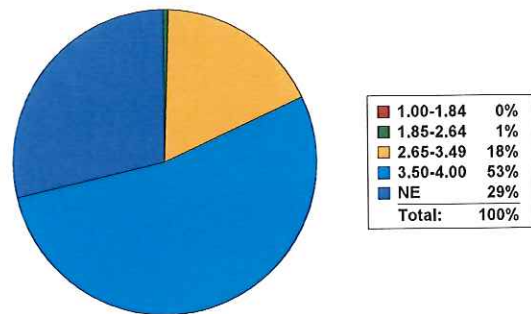
Summative Score	Individuals evaluated in 14-15 SY
1.00-1.84	2.00
1.85-2.64	1.00
2.65-3.49	23.00
3.50-4.00	1.00
NE	172.00

### Evaluation : Teacher Practice Score (2)



Summative Score	Individuals evaluated in 14-15 SY
1.00-1.84	0.00
1.85-2.64	2.00
2.65-3.49	134.00
3.50-4.00	10.00
NE	53.00

### Evaluation : Teacher SGO Score (2)



Summative Score	Individuals evaluated in 14-15 SY
1.00-1.84	0.00
1.85-2.64	1.00
2.65-3.49	35.00
3.50-4.00	106.00
NE	57.00

1 TCIS  
 2 NJSMART  
 3 NJSURE  
 4 Non-submitter to NJSURE



**Novice New Jersey Public School Teachers Profile, cont'd**

The tables on the remaining pages capture additional certification information about this EPP's certified completers and where applicable employment data for those individuals that were hired as of October 15, 2015. The Praxis II table has a suppression of 10.

Praxis II Results: Average Scaled Score (1)			
Praxis II Test	Test Cut Score	EPP Average Scaled Score	State Average Scaled Score
English Language, Literature, and Composition: Content Knowledge	162	170	173
Elementary Education: Multiple Subjects Mathematics	164	178	177
Elementary Education: Multiple Subjects Social Studies	155	170	169
Spanish: World Language	168	178	180
Health and Physical Education: Content Knowledge	151	159	161
Elementary Education: Content Knowledge	141	164	162
Elementary Education: Multiple Subjects Science	159	169	172
Early Childhood: Content Knowledge	159	174	174
Elementary Education: Multiple Subjects Reading Language Arts Subtest	165	180	181
Social Studies: Content Knowledge	157	164	167
Music: Content Knowledge	153	158	168

1 TCIS  
 2 NJSMART  
 3 NJSURE  
 4 Non-submitter to NJSURE



New Jersey Department of Education  
 Educator Preparation Provider Performance Report 2016  
**Monmouth University**

Certification Endorsement Area and Employment (1,2)			
	Individuals obtaining NJ CEAS	Employed as of October 15th, 2015	Percent employed as teachers
Elementary School with Subject Matter Specialization: Social Studies in Grades 5 - 8	1	1	100%
Teacher of Chemistry	1	1	100%
Teacher of Chinese	1	1	100%
Elementary School Teacher with Mathematics Specialization: in Grades 5 - 8	8	7	88%
Teacher of Spanish	12	10	83%
Teacher of Students with Disabilities	137	114	83%
Teacher of Mathematics	31	25	81%
Teacher of Preschool through Grade 3	23	18	78%
Elementary School with Subject Matter Specialization: Science in Grades 5 - 8	4	3	75%
Elementary School Teacher in Grades K - 6	165	111	67%
Teacher of English as a Second Language	38	24	63%
Teacher of English	27	17	63%
Teacher of Biological Science	8	5	63%
Teacher of Art	14	8	57%
Teacher of Social Studies	48	27	56%
Teacher of Music	9	5	56%

1 TCIS  
 2 NJSMART  
 3 NJSURE  
 4 Non-submitter to NJSURE



New Jersey Department of Education  
 Educator Preparation Provider Performance Report 2016  
**Monmouth University**

Elementary School with Subject Matter Specialization: Language Arts/Literacy Specialization in Grades 5 - 8	2	1	50%
Teacher of Health and Physical Education	25	8	32%

Transfer Student (4)			
	Individuals obtaining NJ CEAS	Employed as of October 15, 2015	Percent employed as teachers
Reported as transfered			%

State of Residence, Certification (4)			
	Individuals obtaining NJ CEAS	Employed as of October 15, 2015	Percent employed as teachers
Reported as Out of State while enrolled in program			%

Area of Study (4)			
	Individuals obtaining NJ CEAS	Employed as of October 15th, 2015	Percent employed as teachers
Education	1	1	100 %

Classroom Assignment: Content Area (1,2)		
	Employed as of October 15th, 2015	Percent employed as teachers
Elementary Generalist	55	21 %
Fine and Performing Arts	12	5 %
Life and Physical Sciences	7	3 %
Special Ed	51	20 %
Health and Physical Education	4	2 %
Math	41	16 %
English Language and Literacy	37	14 %
Early Childhood Education(PK-K)	8	3 %
Social Sciences and History	15	6 %
Foreign Language and Literature	9	4 %
ESL	18	7 %

1 TCIS  
 2 NJSMART  
 3 NJSURE  
 4 Non-submitter to NJSURE

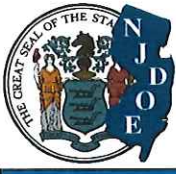




New Jersey Department of Education  
Educator Preparation Provider Performance Report 2016  
Monmouth University

**Data Source Notes:** Certification data is submitted to the NJDOE by EPPs and gathered from the NJ Department of Education's Teacher Certification Information System (TCIS) and is verified by the EPPs prior to publication of the EPPARs. Employment data is submitted to the NJDOE by school districts and gathered from New Jersey's student- and staff-level Standards Measurement and Resource for Teaching data system (NJSMART). Higher Education data is submitted to the NJDOE by Institutes of Higher Education and collected from the Office of the Secretary of Higher Education's Student Unit Record system (NJSURE). Not all Institutes of Higher Education are required to submit data to the NJSURE database. Non-submitters have been noted accordingly. For compensation data, North Region includes: Bergen, Essex, Hudson, Morris, Passaic, Sussex, and Warren Counties. Central Region includes: Hunterdon, Mercer, Middlesex, Monmouth, Somerset, and Union Counties. South Region includes: Atlantic, Burlington, Camden, Cape May, Cumberland, Gloucester, Ocean, and Salem Counties. These are the areas considered DFG A and geographic shortage areas: Asbury Park City, Atlantic City, Bridgeton City, Buena Regional, Camden City, City Of Orange Twp, Commercial Twp, Dover Town, Downe Twp, East Newark Boro, East Orange, Egg Harbor City, Elizabeth City, Fairfield Twp, Fairview Boro, Irvington Township, Keansburg Boro, Lawrence Twp, Millville City, New Brunswick City, Newark City, North Wildwood City, Passaic City, Paterson City, Paulsboro Boro, Penns Grove-Carney's Pt Regional, Perth Amboy City, Pleasantville City, Quinton Twp, Salem City, Seaside Heights Boro, Trenton City, Union City, Vineland City, Washington Twp, Wildwood City, Woodbine Boro. Suppression rules have been applied Praxis II data. For the evaluation data, The 'Teacher SGP Score' chart and table represents this EPP's employed completer's available SGP scores for teachers that were teaching in tested grades and subjects. 'Teacher Practice Score' chart and table represents this EPP's employed completer's available scores from local observations. The 'Teacher SGO Score' chart and table shows this EPP's employed completer's available student growth objective scores. Any questions or inquiries regarding the information contained in this report, please email [rpr@doe.state.nj.us](mailto:rpr@doe.state.nj.us)

- 1 TCIS
- 2 NJSMART
- 3 NJSURE
- 4 Non-submitter to NJSURE

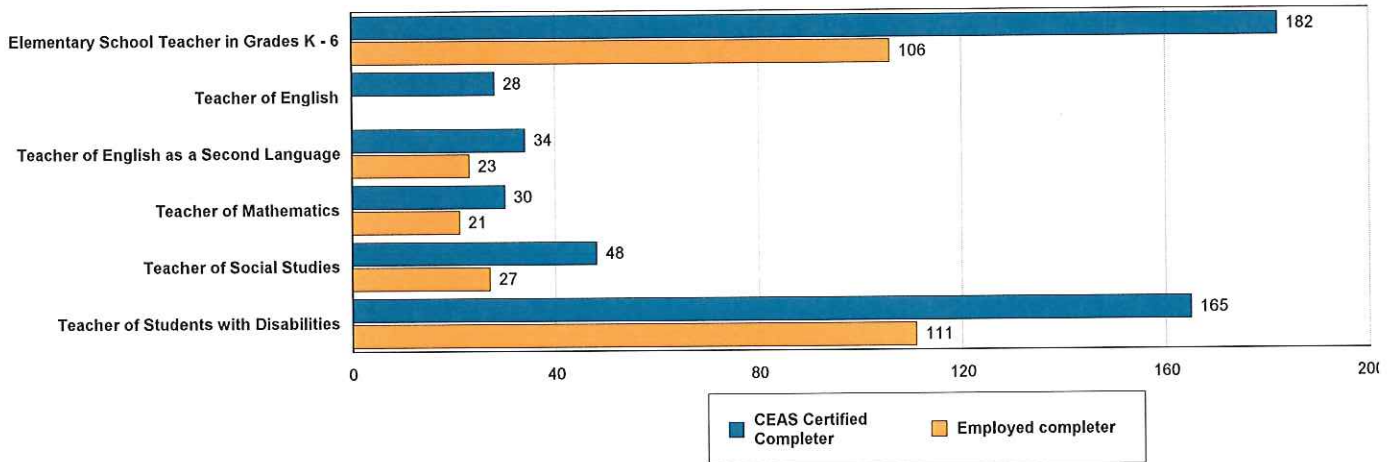


## Monmouth University Cohort Profile

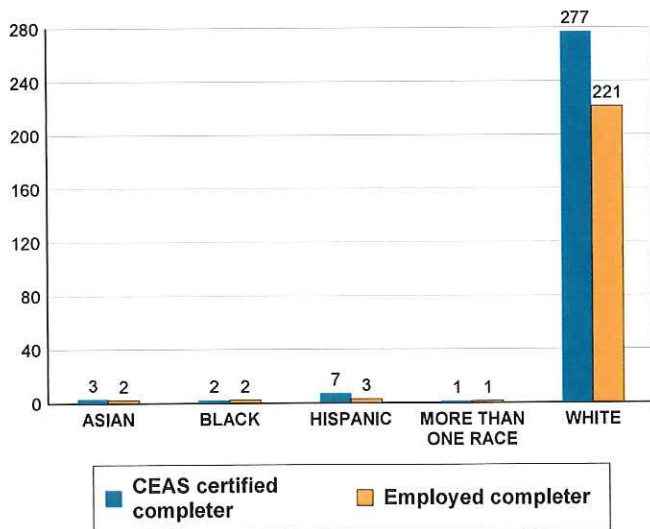
This report includes data that the Department of Education has synthesized from multiple sources: NJSmart, TCIS, NJSure and other existing data collections. The individuals identified in this report as 'CEAS certified completer' were certified in 11-12 and 12-13 with a certificate of eligibility with advanced standing (CEAS). The individuals identified in this report as 'Employed completer' were hired in a New Jersey Public School as of October 15, 2014. Each of the following graphics and tables reference their data source with a 1, 2, 3, or 4. For more details, see footnotes and an additional data explanation on the last page.

NJ public school employed completers in 14-15 SY	229	= 57 %
CEAS-certified completers in 11-12 and 12-13	399	

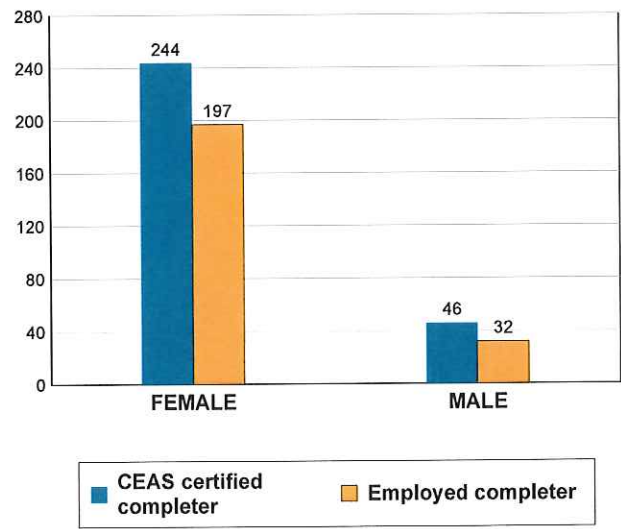
### EPP's 5 Largest Programs (1,2)



### Race (1,2)



### Gender (1,2)



1 TCIS  
 2 NJSMART  
 3 NJSURE  
 4 Non-submitter to NJSURE



## Novice New Jersey Public School Teachers Profile

The following tables capture information about the public schools in New Jersey where this EPP's employed completers were hired as of October 15, 2014. The 'School Classification' table refers to our reward and priority schools. The 'Classroom Assignment: Teacher Shortage' table refers to individuals that obtained an endorsement in a teacher shortage area and are also employed in a teacher shortage position. 'District Factor Group (DFG)' refers to the grouping of similar school districts by socio-economic level. 'Compensation' refers to the average of all starting salaries of this EPP's employed completers in New Jersey Public Schools regionally.

DFG: <http://www.state.nj.us/education/finance/rda/dfg.shtml>

Priority/Focus: <http://www.state.nj.us/education/rac/schools/>

School Classification (2)			
	Employed as of October 15, 2014	Percentage Employed as teachers	Percentage Employed Statewide
Priority Schools	4	2 %	2 %
Focus Schools	14	6 %	11 %
Reward Schools	5	2 %	1 %
Not Classified	207	90 %	86 %

Classroom Assignment: Teacher Shortage Area (1,2)			
	Individuals obtaining NJ CEAS	Employed as of October 15, 2014	Employed in Teacher Shortage Area
Teacher Shortage Area	243	162	106
Non-Teacher Shortage Area	156	67	

District Factor Group (DFG) (2)			
	Employed as of October 15, 2014	Percentage Employed as teachers	Percentage Employed Statewide
A	17	7%	14%
B	11	5%	10%
CD	22	10%	8%
DE	36	16%	12%
FG	35	15%	12%
GH	45	20%	13%
I	46	20%	18%
J	5	2%	3%
Charter	4	2%	5%
Vocational	9	4%	4%

Compensation (2)		
	Median Salary	Number of Teachers
All Employed teachers in North region	\$ 51,400	42
All Employed teachers in Central region	\$ 52,665	152
All Employed teachers in South region	\$ 50,000	28
All Employed teachers	\$ 52,161	227

1 TCIS  
 2 NJSMART  
 3 NJSURE  
 4 Non-submitter to NJSURE



### Novice New Jersey Public School Teachers Profile, cont'd

The 'Persistence' chart and table below shows how many employed completers were hired in New Jersey Public Schools in the 13-14 SY and were still working in a New Jersey Public School in the 14-15 SY. Additionally, the tables below capture endorsement information about this EPP's CEAS certified candidates that were hired in New Jersey public schools.

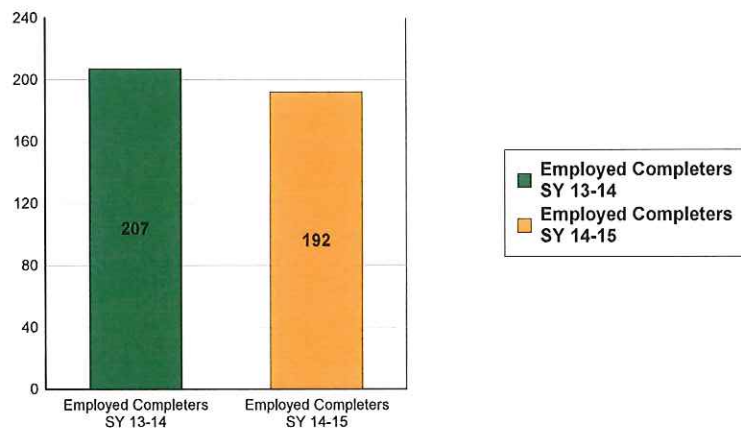
Number Of Endorsements Obtained and Employment (1,2)

	Individuals obtaining NJ CEAS	Employed as of October 15th, 2014	Percent employed as teachers
One Endorsement	196	94	48%
Two Endorsements	178	115	65%
Three or More Endorsements	25	20	80%

Cummulative GPA (4)

	Individuals obtaining NJ CEAS
Median GPA	

Persistence (2)



Persistence

Percent

Continued Employment In NJ in 14-15	92.8 %
-------------------------------------	--------

1 TCIS  
 2 NJSMART  
 3 NJSURE  
 4 Non-submitter to NJSURE



New Jersey Department of Education  
 Educator Preparation Provider Annual Report 2015  
**Monmouth University**

The tables on the following pages capture additional endorsement information about this EPP's CEAS certified candidates and where applicable employment data for those that were hired as of October 15, 2014.

Praxis II Results: Average Scaled Score <sup>(1)</sup>			
	Praxis II Test	Average Scaled Score	State Average Scaled Score
Elementary School Teacher in Grades K - 6	Elementary Education Content Knowledge	163	176
Teacher of Art	Art Content Knowledge	165	178
Teacher of Biological Science	General Science: Content Knowledge	164	164
Teacher of Biological Science	Biology: Content Knowledge	164	166
Teacher of English	English Language, Literature and Composition Content Knowledge	171	184
Teacher of Health and Physical Education	Health & Physical Education: Content Knowledge	158	167
Teacher of Mathematics	Mathematics: Content Knowledge	147	153
Teacher of Preschool through Grade 3	Early Childhood: Content Knowledge	175	175
Teacher of Social Studies	Social Studies: Content Knowledge	166	172

1 TCIS  
 2 NJSMART  
 3 NJSURE  
 4 Non-submitter to NJSURE



New Jersey Department of Education  
 Educator Preparation Provider Annual Report 2015  
 Monmouth University

Certification Endorsement Area and Employment (1,2)			
	Individuals obtaining NJ CEAS	Employed as of October 15th, 2014	Percent employed as teachers
Elementary School Teacher in Grades K - 6	182	106	58%
Elementary School Teacher with Mathematics Specialization: in Grades 5 - 8	6	4	67%
Elementary School with Subject Matter Specialization: Science in Grades 5 - 8	7	6	86%
Elementary School with Subject Matter Specialization: Social Studies in Grades 5 - 8	2	1	50%
Teacher of Art	18	9	50%
Teacher of Biological Science	12	8	67%
Teacher of Chemistry	2	2	100%
Teacher of Chinese	2	1	50%
Teacher of English	28	17	61%
Teacher of English as a Second Language	34	23	68%
Teacher of Health and Physical Education	14	5	36%
Teacher of Mathematics	30	21	70%
Teacher of Music	9	4	44%
Teacher of Physical Science	1	1	100%
Teacher of Preschool through Grade 3	28	13	46%
Teacher of Social Studies	48	27	56%

1 TCIS  
 2 NJSMART  
 3 NJSURE  
 4 Non-submitter to NJSURE



New Jersey Department of Education  
Educator Preparation Provider Annual Report 2015  
Monmouth University

Teacher of Spanish	8	5	63%
Teacher of Students with Disabilities	165	111	67%

1 TCIS  
2 NJSMART  
3 NJSURE  
4 Non-submitter to NJSURE



New Jersey Department of Education  
 Educator Preparation Provider Annual Report 2015  
 Monmouth University

Transfer Student (4)			
	Individuals obtaining NJ CEAS	Employed as of October 15, 2014	Percent employed as teachers
Reported as transferred			%

State of Residence, Certification (4)			
	Individuals obtaining NJ CEAS	Employed as of October 15, 2014	Percent employed as teachers
Reported as Out of State while enrolled in program			%

Area of Study (4)			
	Individuals obtaining NJ CEAS	Employed as of October 15th, 2014	Percent employed as teachers
			%

Classroom Assignment: Content Area (1,2)		
	Employed as of October 15th, 2014	Percent employed as teachers
English Language and Literacy	16	7 %
Health and Physical Education	6	3 %
Life and Physical Sciences	15	7 %
Fine and Performing Arts	11	5 %
Math	23	10 %
Social Sciences and History	20	9 %
Early Childhood Education(PK-K)	5	2 %
ESL	8	3 %
Elementary Generalist	60	26 %
Foreign Language and Literature	8	3 %
other	1	0 %
Special Ed	57	25 %

1 TCIS  
 2 NJSMART  
 3 NJSURE  
 4 Non-submitter to NJSURE





New Jersey Department of Education  
Educator Preparation Provider Annual Report 2015  
Monmouth University

**Data Source Notes:** Certification data is submitted to the NJDOE by EPPs and gathered from the NJ Department of Education's Teacher Certification Information System (TCIS) and is verified by the EPPs prior to publication of the EPPARs. Employment data is submitted to the NJDOE by school districts and gathered from New Jersey's student- and staff-level Standards Measurement and Resource for Teaching data system (NJSMART). Higher Education data is submitted to the NJDOE by Institutes of Higher Education and collected from the Office of the Secretary of Higher Education's Student Unit Record system (NJSURE). Not all Institutes of Higher Education are required to submit data to the NJSURE database. Non-submitters have been noted accordingly. For compensation data, North Region includes: Bergen, Essex, Hudson, Morris, Passaic, Sussex, and Warren Counties. Central Region includes: Hunterdon, Mercer, Middlesex, Monmouth, Somerset, and Union Counties. South Region includes: Atlantic, Burlington, Camden, Cape May, Cumberland, Gloucester, Ocean, and Salem Counties. Suppression rules have been applied Praxis II data.

Any questions or inquiries regarding the validity of the data contained in this report, please email

[rpr@doe.state.nj.us](mailto:rpr@doe.state.nj.us)

- 1 TCIS
- 2 NJSMART
- 3 NJSURE
- 4 Non-submitter to NJSURE